

DESIGN

Body	Flangeless wafer type
End Connection	EN 1092 PN 25, 40 ASME B16.5 cl. 300 / B16.47 cl. 300 MSS SP 44 cl. 300
Face to Face	EN558-1/2 Series 16
Disc Seat	Replaceable
Shaft Seal Design	Stuffing box
Driving Shaft	With indicator for position of the disc
Special Design Options	-

TESTING PROCEDURES

Shell strength test	EN 12266-1, P10 DIN 3230, Part 3 API 598
Shell tightness test	EN 12266-1, P11 API 598
Seat tightness test	EN 12266-1, P12, Rate A/B ISO 5208, Rate A/B API 598
Operability test	EN 12266-2, F20 DIN 3230, Part 3 API 598

OPTIONS

Anti Static Design	In accordance with EN 736/3 and API 609
--------------------	---

FUNCTIONAL CHARACTERISTICS

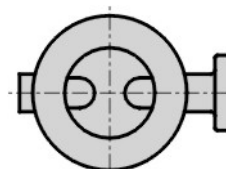
Application	On/off
Design pressure PS	Maximum 50 bar
Design temp. TS	-40°C (-40°F) to +250 °C (482 °F), higher on request
Flow velocity	5 m/s for liquids, 50 m/s for gases
Seat tightness rate	Bi-directional - ISO 5208 rate A (soft seated) Uni-directional - ISO 5208 rate B (metal seated)

MARKING & CERTIFICATION

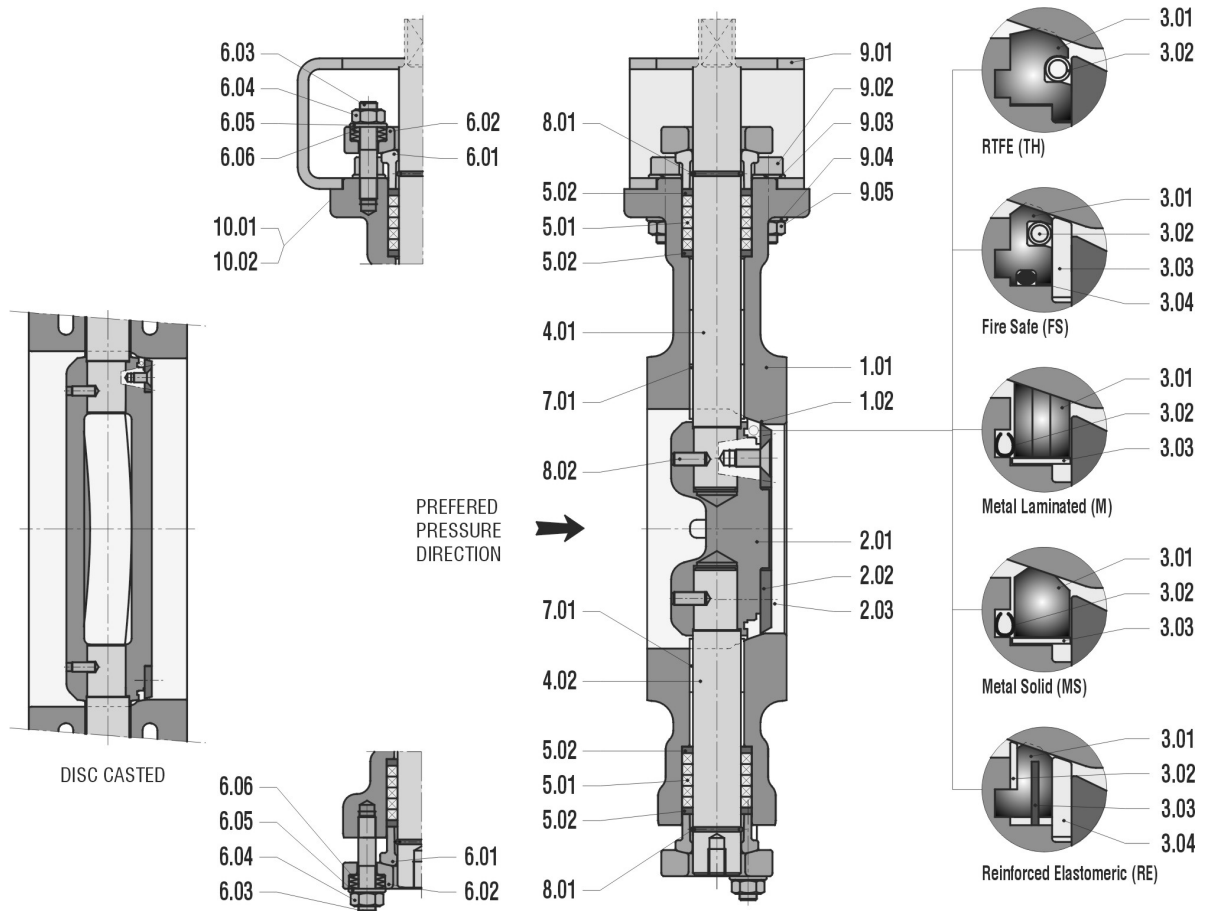
Marking	EN 19, MSS SP 25
Certification	EN 10204 - 2.2, 3.1, 3.2
PED	Categorie III

**PRODUCT DATA**

General Description	BUTTERFLY VALVE - High Performance double excentric
Design Code	EN 593
Size Range	DN 50 - 600, NPS 2" - 24"
Maximum Pressure	50 bar

PREFERRED POSITION WHEN INSTALLED IN HORIZONTAL PIPELINE

PARTS LIST - DYNAXE W162 - 50-600 (2"-24")



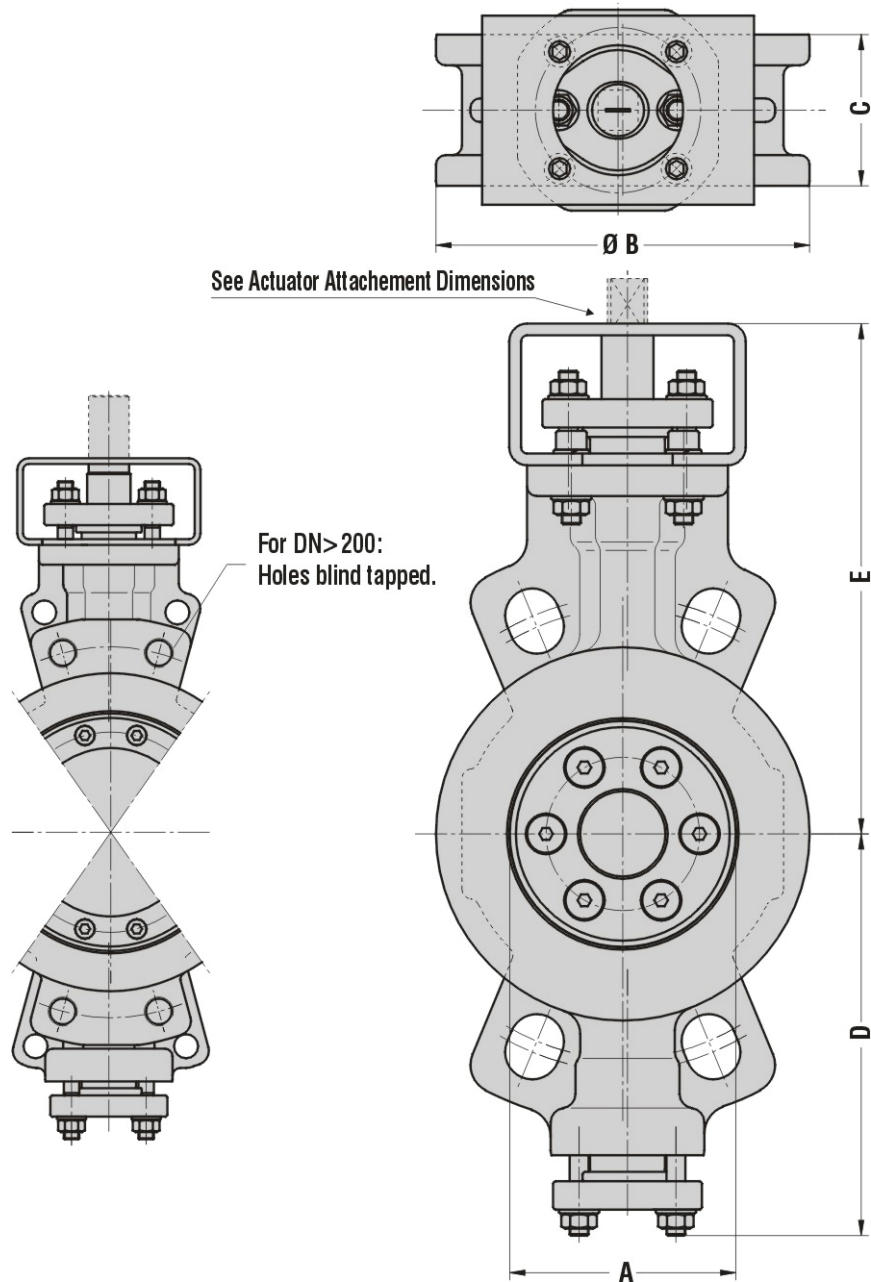
ITEM	DESCRIPTION	MATERIAL ⁽¹⁾	EN/DIN	COMPARABLE ASTM
1.01	Body	Austenitic SS Carbon Steel	1.4408, EN 10213 1.0619, EN 10213	A 351, CF8M A 216, WCB
1.02	Body seat	Stainless steel Stellite	1.4370	-
2.01	Disc	Austenitic SS ⁽²⁾ Carbon Steel ⁽³⁾	1.4401, EN 10088 1.0460, EN 10273	A 182, F316 A 105 N
2.02	Retaining ring	Austenitic SS	1.4401, EN 10088	A 182, F316
2.03	Screw	Stainless Steel - A4/70		
3.01	Disc seat ring (TH)	RTFE 15-12-3	-	-
3.02	Helix coil	Austenitic SS	1.4401, EN 10088	A 182, F316
4.01	Upper shaft	Austenitic SS Martensitic SS	1.3964 1.4021, EN 10088	A 479, XM-19 A 276, 420
4.02	Lower shaft	See ITEM 4.01	See ITEM 4.01	See ITEM 4.01
5.01	Packing ring	Graphite (>99.85%)		
5.02	Taper ring	Austenitic SS	1.4401, EN 10088	A 182, F316
6.01	Packing gland	Austenitic SS	1.4408, EN 10213	A 351, CF8M
6.02	Gland flange	Austenitic SS	1.4408, EN 10213	A 351, CF8M
6.03	Stud bolt	Stainless Steel - A4/70		
6.04	Hex. nut	Stainless Steel - A4/70		
6.05	Washer	Stainless Steel - A4		
6.06	Beveled washer	Stainless Steel		
7.01	Sliding bearing	Austenitic SS / coated	1.4401, EN 10088	A 182, F316
8.01	Snap ring	Stainless Steel	1.4310	
8.02	Set screw	Stainless Steel - A4/70		
9.01	Bracket	Austenitic SS	1.4401, EN 10088	A 182, F316
9.02	Screw	Stainless Steel - A4/70		
9.03	Washer	Stainless Steel - A4		
9.04	Spring lock washer	Stainless Steel - A4		
9.05	Hex. nut	Stainless Steel - A4/70		
10.01	Marking plate	Austenitic SS	1.4401, EN 10088	A 182, F316
10.02	Blind rivet	Stainless Steel - A4		

⁽¹⁾ Other materials like Duplex, 6Mo, Titanium, on request

⁽²⁾ forged ≤ DN 125, casted ≥ DN 150, material 1.4408, EN 10213 (A 351, CF8M)

⁽³⁾ forged ≤ DN 125, casted ≥ DN 150, material 1.0619, EN 10213 (A 216, WCB)

DIMENSIONS – DYNAXE W162 – 50-600 (2"-24") ⁽⁴⁾



DN	NPS	A	B	C	D	E	MASS ±kg
50	2"	58	101	43	139	197	9
65	2½"	58	120	46	139	197	11
80	3"	71	135	64	157	204	11
100	4"	96	158	64	170	216	13
125	5"	120	188	70	202	263	21
150	6"	150	215	76	217	278	25
200	8"	197	276	89	252	307	50
250	10"	251	330	114	319	388	87
300	12"	301	389	114	343	413	107

DN	NPS	A	B	C	D	E	MASS ±kg
350	14"	323	430	127	441	473	176
400	16"	372	505	140	495	585	274
450	18"	425	547	152	521	611	309
500	20"	477	610	152	550	642	359
600	24"	559	720	178	640	728	580

⁽⁴⁾ Other sizes on request