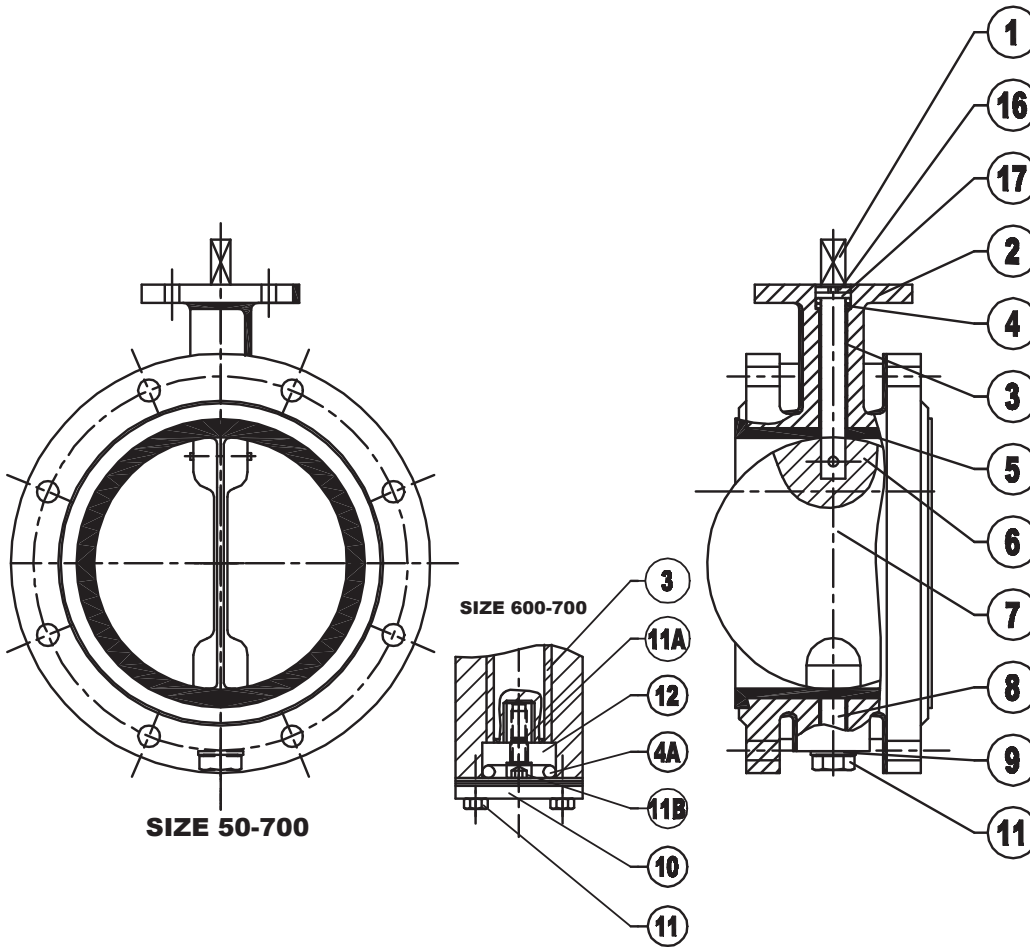


# WVFL-70-2

DOUBLE FLANGED TYPE



**World-Valve**  
MANUFACTURED IN THE NETHERLANDS



1	AS	SHAFT	SPINDEL	HUSILLO
2	AFSLUITERHUIS	BODY	GEHÄUSE	CAJA
3	LAGERBUS	BEARING	LAGERBUCHSE	COJINETTE
4	O-RING	O-RING	O-RING	ANILLO-O
4A	O-RING	O-RING	O-RING	ANILLO-O
5	VOERING	LINER	FUTTER	MANQUITO
6	PEN	PIN	STIFT	CLAVIJA
7	KLEP	VALVULA	DISC	KLAPPENSCHIEBE
8	AS	SHAFT	SPINDEL	HUSILLO
9	PAKKING	PACKING	PACKUNG	EMPAQUETADURA
10	ACHTERPLAAT	COVER PLATE	LAGERDECKEL	TAPA
11	BOUT	BOLT	SCHRAUBE	PERNO
11A	BOUT	BOLT	SCHRAUBE	PERNO
11B	BOUT	BOLT	SCHRAUBE	PERNO
12	DRUKLAGER	THRUST BEARING	DRUCKLAGER	COJINETTE
16	BORGRING	LOCK WASHER	SICHERUNGSRING	ANILLO DE SOJECION
17	RING	RING	RING	ILAVE

FLANGE CONNECTION	
DIN-PN 6/10/16	
ANSI-CLASS 125/150	
JIS-5/10/K	
JIS-16K	
WHEN REQUESTED	

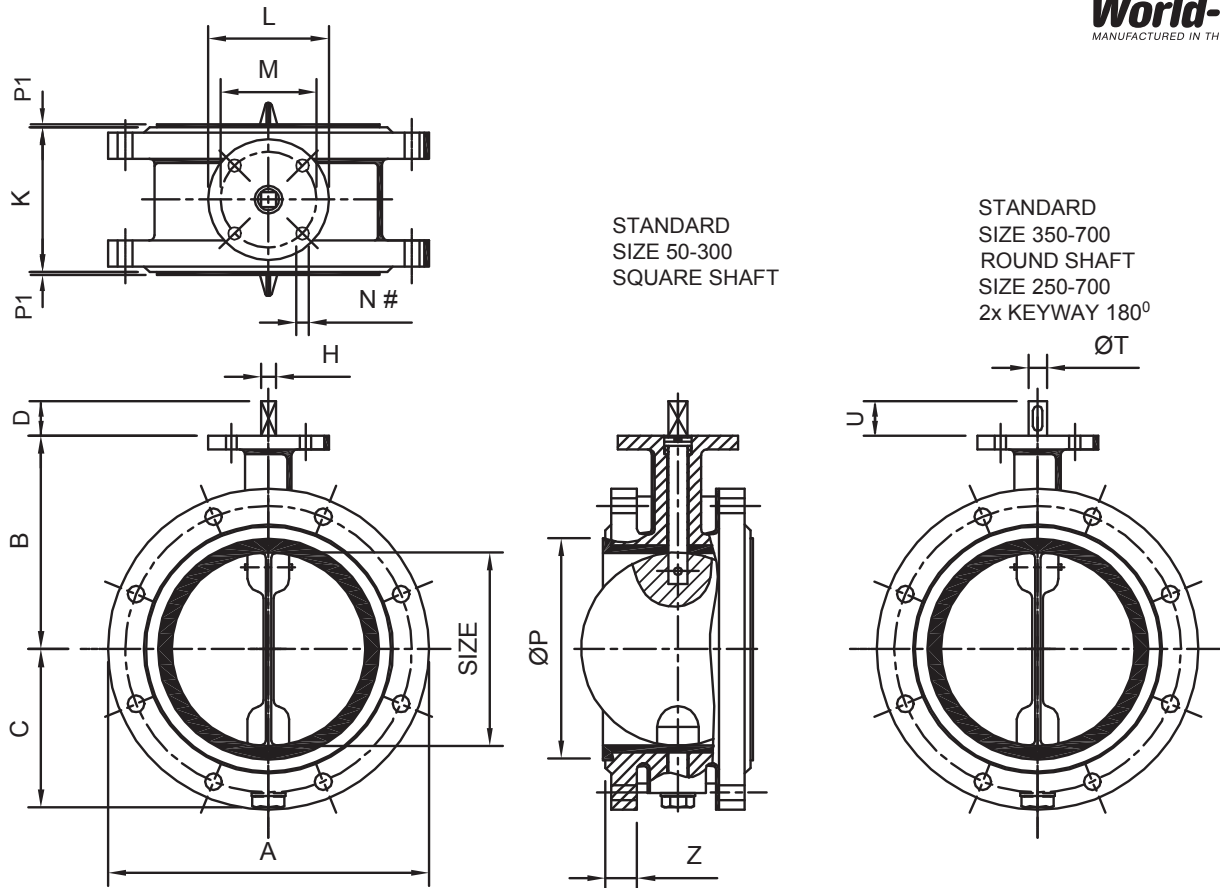
FIGURE: MATERIAL COMBINATION				ONLY SIZE 250-700
TYPE	B	C	D	X
BODY	STANDARD DUCTILE IRON GGG-40			
DISC	AL.BRONZE	AISI-316	AL.BRONZE	GGG-40
SHAFT	AISI-316	AISI-316	AL.BRONZE	AISI-304
PINS	STANDARD DUPLEX			
LINER	STANDARD BUNA-N OR EPDM			

WHEN REQUESTED					
BODY	B-AL.BRONZE	A-AISI-304 C-AISI-316	S-RST- 37/2 G-GSC-25	K-SILUMIN	
DISC	J-DUPLEX	H-HASTELLOY			
SHAFT AND PINS	M-MONEL K-500	H-HASTELLOY	J-DUPLEX		
LINER	V-VITON	H-HYPALON	S-SILICONE	N-NITRIL FOOD	U-VULKOLAN
TOPFLANGE ACC. ISO-5211					

FACE TO FACE DIMENSIONS ACCORDING **WORLD-VALVE STANDARD**

# WVFL-70-2

DOUBLE FLANGED TYPE



## DIMENSIONS

SIZE mm	SIZE inch	A	B	C	D	H	K	L	M	N (#)	P	P1	T	U	Z	Kg
50	2	165	128	70	37	12	120	90	66	9 (4)	88	1.5	16	40	20	9
65	2.5	185	136	80	37	12	120	90	66	10 (4)	108	1.5	16	40	20	11
80	3	200	144	88	37	12	120	90	66	11 (4)	120	1.5	16	40	23	14
100	4	220	154	98	37	12	120	90	66	11 (4)	140	1.5	16	40	23	16
125	5	250	184	114	37	16	130	110	80	11 (4)	170	2	20	40	26	24
150	6	285	194	124	37	16	130	110	80	11 (4)	198	2	20	40	26	27
175	7	315	206	145	37	16	150	110	80	11 (4)	230	2	20	40	28	32
200	8	340	229	180	37	16	150	130	80	11 (4)	250	2	22	40	31	38
250	10	405	261	190	37	24	160	175	135	14 (4)	308	3	30	50	31	60
300	12	460	286	220	37	24	180	175	135	14 (4)	358	3	30	50	31	70
350	14	520	322	260	-	-	180	175	135	14 (4)	418	3	35	50	35	90
400	16	580	352	280	-	-	220	175	135	14 (4)	468	3	40	60	35	115
450	18	640	380	325	-	-	220	175	135	14 (4)	518	3	45	60	36	130
500	20	715	420	340	-	-	220	175	135	14 (4)	568	3	45	60	36	180
600	24	840	468	425	-	-	220	210	165	22 (4)	668	3	60	70	40	260
700	28	910	533	464	-	-	220	300	254	18 (8)	778	3	70	85	40	295

M = TOPFLANGE SIZE 600-700 ACC. ISO-5211

K = FACE TO FACE ACC. WORLD-VALVE STANDARD

(#) = NUMBER OF HOLES

## PRESSURE TABLE

STANDARD DELIVERY			WHEN REQUESTED			
STANDARD WORKING/TESTPRESSURE			MAXIMUM WORKING/TESTPRESSURE			
SIZE mm	WP ΔP-BAR	TP ΔP-BAR	SIZE mm	WP ΔP-BAR	TP ΔP-BAR	ONE PIECE SHAFT
50-150	10	11	50-150	16	18	-
			175-300	10	11	-
175-700	6	7	350-700	10	11	YES
			200-500	16	18	YES

BODY TEST 1.5 X PN

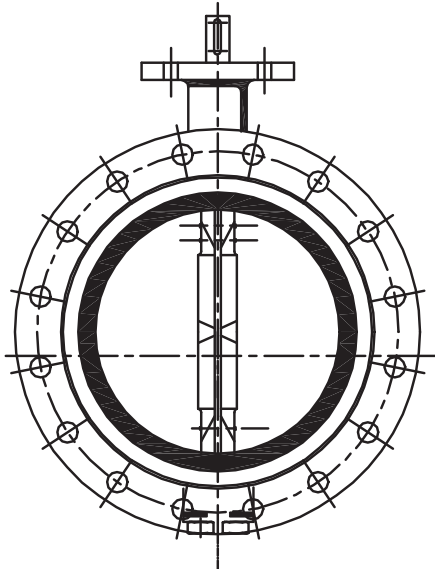
FACE TO FACE DIMENSIONS ACCORDING WORLD-VALVE STANDARD

# WVFL-70-2

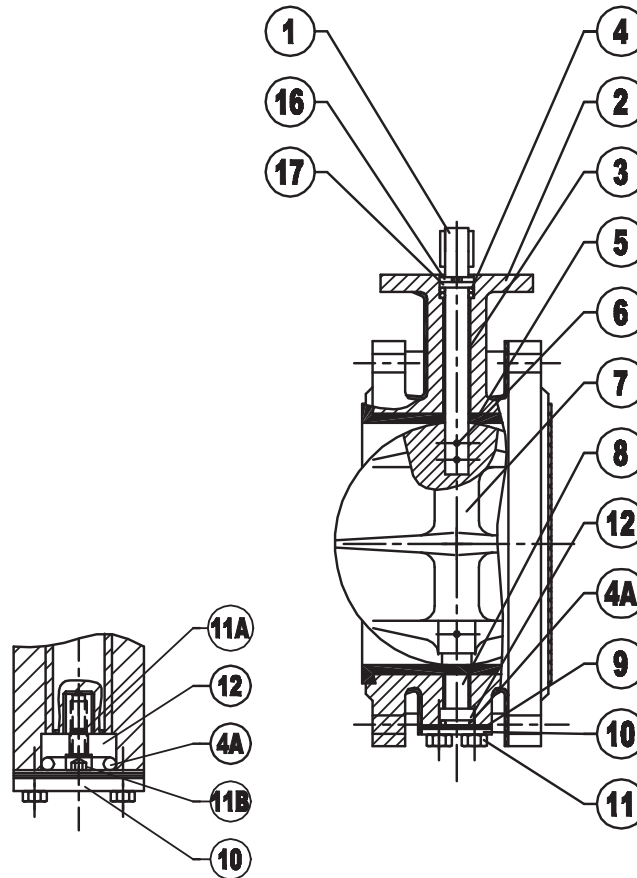
DOUBLE FLANGED TYPE



**World-Valve**  
MANUFACTURED IN THE NETHERLANDS



**SIZE 750-2000**



1	AS	SHAFT	SPINDEL	HUSILLO
2	AFSLUITERHUIS	BODY	GEHÄUSE	CAJA
3	LAGERBUS	BEARING	LAGERBUCHSE	COJINETTE
4	O-RING	O-RING	O-RING	ANILLO-O
4A	O-RING	O-RING	O-RING	ANILLO-O
5	VOERING	LINER	FUTTER	MANQUITO
6	PEN	PIN	STIFT	CLAVIJA
7	KLEP	DISC	KLAPPENSCHIEBE	VALVULA
8	AS	SHAFT	SPINDEL	HUSILLO
9	PAKING	PACKING	PACKUNG	EMPAQUETADURA
10	ACHTERPLAAT	COVER PLATE	LAGERDECKEL	TAPA
11	BOUT	BOLT	SCHRAUBE	PERNO
11A	BOUT	BOLT	SCHRAUBE	PERNO
11B	BOUT	BOLT	SCHRAUBE	PERNO
12	DRUKLAGER	THRUST BEARING	DRUCKLAGER	COJINETTE
16	BORGRING	LOCK WASHER	SICHERUNGSRING	ANILLO DE SOJECION
17	RING	RING	RING	ILAVE

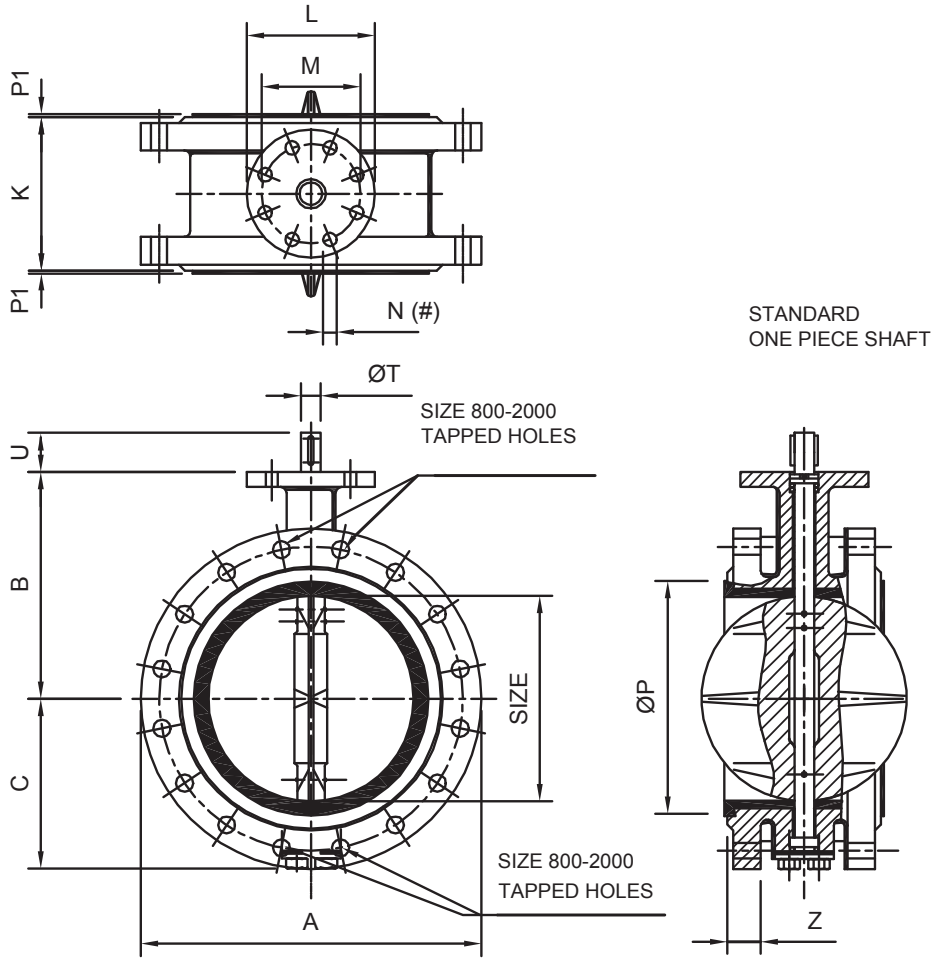
FLANGE CONNECTION	
DIN-PN 6/10/16	
ANSI-CLASS 125/150	
JIS-5/10K	

FIGURE: MATERIAL COMBINATION				
TYPE	B	C	D	X
BODY	STANDARD DUCTILE IRON GGG-40			
DISC	AL.BRONZE	AISI-316	AL.BRONZE	GGG-40
SHAFT	AISI-316	AISI-316	AL.BRONZE	AISI-304
PINS	STANDARD DUPLEX			
LINER	STANDARD BUNA-N OR EPDM			

WHEN REQUESTED					
BODY	B-AL.BRONZE	A-AISI-304 C-AISI-316	S-RST- 37/2 G-GSC-25	K-SILUMIN	
DISC	J-DUPLEX	H-HASTELLOY			
SHAFT AND PINS	M-MONEL K-500	H-HASTELLOY	J-DUPLEX		
LINER	V-VITON	H-HYPALON	S-SILICONE	N-NITRIL FOOD	U-VULKOLAN

# WVFL-70-2

DOUBLE FLANGED TYPE



## DIMENSIONS

SIZE mm	SIZE inch	A	B	C	K	L	ISO 5211 M	N (#)	P	P1	T	U	Z	Kg
750	30	984	575	495	220	300	254	18 (8)	835	3	70	85	40	480
800	32	1010	642	539	220	350	298	22 (8)	885	3	80	85	40	680
900	36	1120	670	580	220	350	298	22 (8)	985	3	90	100	40	880
1000	40	1230	746	646	220	350	298	22 (8)	1090	3	90	100	40	980
1100	44	1403	790	680	280	350	298	22 (8)	1240	3	110	105	47	1040
1200	48	1485	841	737	280	415	356	32 (8)	1310	3	110	105	47	1090
1300	52	1625	915	845	320	415	356	32 (8)	1389	3	110	150	47	1180
1350	54	1685	975	905	320	415	356	32 (8)	1435	3	110	150	47	1260
1400	56	1685	975	905	320	415	356	32 (8)	1490	3	110	150	47	1380
1500	60	1854	1030	960	320	475	406	38 (8)	1605	3	110	150	50	1600
1600	64	1930	1160	1000	350	475	406	38 (8)	1690	3	120	150	50	1800
1800	72	2130	1200	1100	490	475	406	38 (8)	1900	3	120	150	60	2050
2000	80	2345	1310	1200	540	475	406	38 (8)	2105	3	140	180	60	2300

K = FACE TO FACE ACC. WORLD-VALVE STANDARD

(#) = NUMBER OF HOLES

## PRESSURE TABLE

STANDARD DELIVERY				WHEN REQUESTED			
STANDARD WORKING/TESTPRESSURE				MAXIMUM WORKING/TESTPRESSURE			
SIZE mm	WP ΔP-BAR	TP ΔP-BAR	ONE PIECE SHAFT	SIZE mm	WP ΔP-BAR	TP ΔP-BAR	ONE PIECE SHAFT
750-1400	6	7	YES	750-1400	10	11	YES
1500-2000	4	5	YES	-	-	-	-

BODY TEST 1.5 X PN

FACE TO FACE DIMENSIONS ACCORDING WORLD-VALVE STANDARD