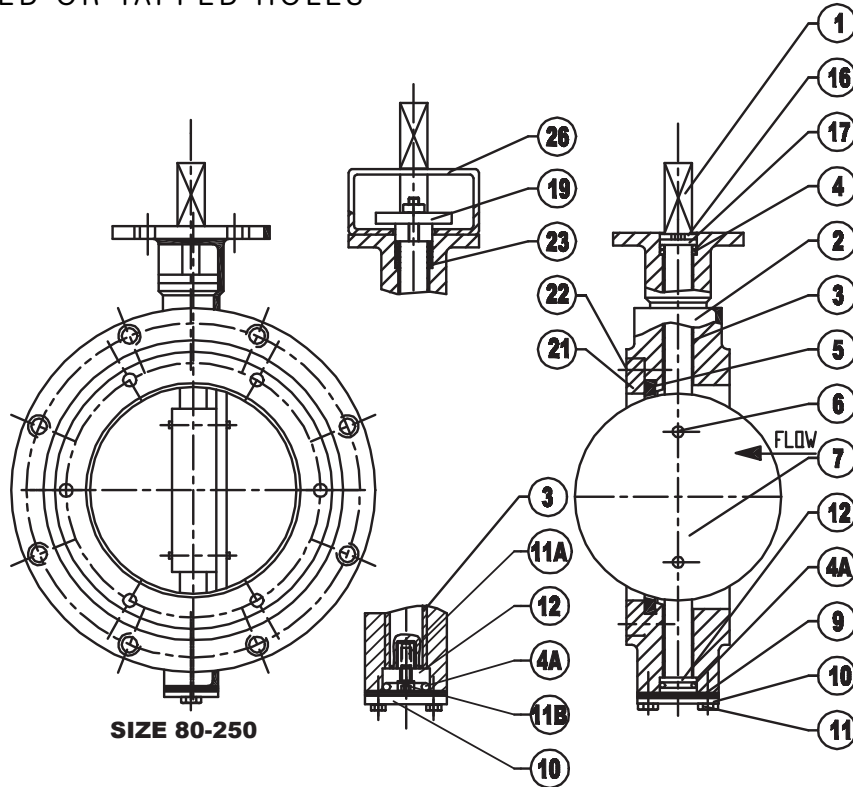


WVTB-NOVA-LT

WAFLER LUG TYPE DOUBLE ECCENTRIC - RENEWABLE SEAT
DRILLED OR TAPPED HOLES



SIZE 80-250

1	AS	SHAFT	SPINDEL	HUSILLO
2	AFSLUITERHUIS	BODY	GEHÄUSE	CAJA
3	LAGERBUS	BEARING	LAGERBUCHSE	COJINETTE
4	O-RING	O-RING	O-RING	ANILLO-O
4A	O-RING	O-RING	O-RING	ANILLO-O
5	AFDICHTING	SEAT	DICHTUNG	MANQUITO
6	PEN	PIN	STIFT	CLAVIJA
7	KLEP	DISC	KLAPPENSCHIEBE	VALVULA
8	AS	SHAFT	SPINDEL	HUSILLO
9	PAKKING	PACKING	PACKUNG	EMPAQUETADURA
10	ACHTERPLAAT	COVER PLATE	LAGERDECKEL	TAPA
11	BOUT	BOLT	SCHRAUBE	PERNO
11A	BOUT	BOLT	SCHRAUBE	PERNO
11B	BOUT	BOLT	SCHRAUBE	PERNO
12	DRUKLAGER	THRUST BEARING	DRUCKLAGER	COJINETTE
16	BORGRING	LOCK WASHER	SICHERUNGSRING	ANILLO DE SOJECION
17	RING	RING	RING	ILAVE
19	PAKKINGDRUKKER	GLAND	STOPFBUCHSENBRILLE	CASQUILLO PRESAETOP
21	KLEMRING	CLAMPING RING	KLEMMRING	ANILLO DE RETENIDA
22	BOUT	BOLT	SCHRAUBE	PERNO
23	PAKKING	PACKING	PACKUNG	EMPAQUETADURA
26	BRUGSTUK	BRACKET	ZWISCHENSTÜCK	PIEZA INTERMEDIA

FLANGE CONNECTION
DIN-PN 6/10/16
ANSI-CLASS 125/150
JIS-5/10
JIS-16K
WHEN REQUESTED

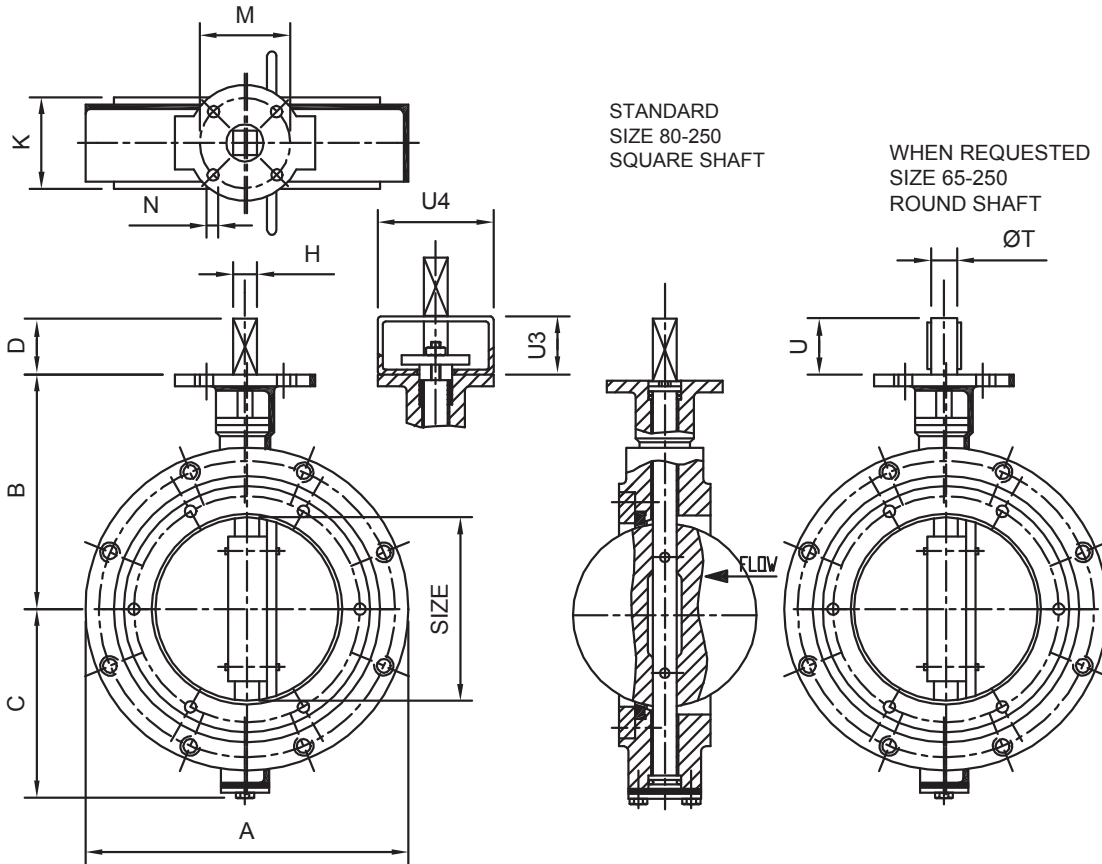
FIGURE: MATERIAL COMBINATION	B	C	D
TYPE			
BODY	STANDARD DUCTILE IRON GGG-40		
DISC	AL.BRONZE	AISI-316	AL.BRONZE
SHAFT	AISI-316	AISI-316	AL.BRONZE
SHAFT SEAL	STANDARD BUNA-N OR VITON		
PINS	STANDARD DUPLEX		
LINER	STANDARD BUNA-N OR EPDM		

WHEN REQUESTED					
BODY	B-AL.BRONZE	A-AISI-304 C-AISI-316	S-RST-37/2 G-GS-C25	K-SILUMIN	
DISC	J-DUPLEX	H-HASTELLOY			
SHAFT PACKING	R-GRAFOIL	T-PTFE			
SHAFT AND PINS	M-MONEL K-500	H-HASTELLOY	J-DUPLEX		
SEAT	V-VITON S-SILICONE	FIRESAFE/DESIGN F-PTFE/INCONEL	METAL-SEAT I-INCONEL	K-PTFE+AISI-316	T-PTFE
TOPFLANGE ACC.	ISO-5211				

FACE TO FACE DIMENSIONS ACCORDING INTERNATIONAL STANDARDS

WVTB-NOVA-LT

WAFER LUG TYPE DOUBLE ECCENTRIC - RENEWABLE SEAT
DRILLED OR TAPPED HOLES



DIMENSIONS

SIZE mm	SIZE inch	A	B	C	D	H	K	M	N	T	U	U3	U4	Kg
80	3	200	155	75	37	16	64	80	11	20	40	100	150	8
100	4	220	164	91	37	16	64	80	11	20	40	100	150	12
125	5	250	196	107	37	16	70	80	11	20	40	100	150	19
150	6	285	206	120	37	16	76	80	11	25	50	100	150	24
200	8	340	241	180	37	16	89	80	11	25	50	100	150	34
250	10	405	285	240	37	24	114	135	14	30	50	100	200	65

WHEN REQUESTED: BI-DIRECTIONAL SHUT OFF
STANDARD: TAPPED HOLES
K = FACE TO FACE ACC. DIN-3202 K3 (ISO SERIES 16) (BS-LONG)

PRESSURE TABLE

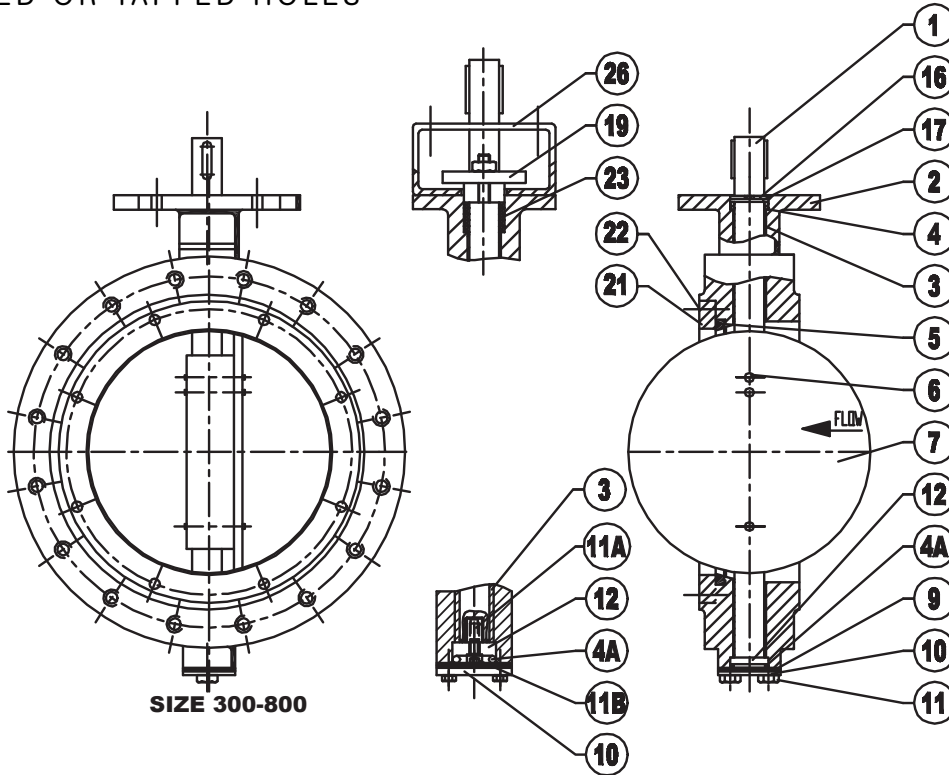
STANDARD DELIVERY			WHEN REQUESTED		
STANDARD WORKING/TESTPRESSURE			MAXIMUM WORKING/TESTPRESSURE		
SIZE mm	WP ΔP-BAR	TP ΔP-BAR	SIZE mm	WP ΔP-BAR	TP ΔP-BAR
80-250	10	11	80-250	16	18
			80-250	25	28

BODY TEST 1.5X PN

FACE TO FACE DIMENSIONS ACCORDING INTERNATIONAL STANDARDS

WVTB-NOVA-LT

WAFLER LUG TYPE DOUBLE ECCENTRIC - RENEWABLE SEAT
DRILLED OR TAPPED HOLES



SIZE 300-800

1	AS	SHAFT	SPINDEL	HUSILLO
2	AFSLUITERHUIS	BODY	GEHÄUSE	CAJA
3	LAGERBUS	BEARING	LAGERBUCHSE	COJINETTE
4	O-RING	O-RING	O-RING	ANILLO-O
4A	O-RING	O-RING	O-RING	ANILLO-O
5	AFDICHTING	SEAT	DICHTUNG	MANQUITO
6	PEN	PIN	STIFT	CLAVIJA
7	KLEP	DISC	KLAPPENSCHIEBE	VALVULA
8	AS	SHAFT	SPINDEL	HUSILLO
9	PAKKING	PACKING	PACKUNG	EMPAQUETADURA
10	ACHTERPLAAT	COVER PLATE	LAGERDECKEL	TAPA
11	BOUT	BOLT	SCHRAUBE	PERNO
11A	BOUT	BOLT	SCHRAUBE	PERNO
11B	BOUT	BOLT	SCHRAUBE	PERNO
12	DRUKLAGER	THRUST BEARING	DRUCKLAGER	COJINETTE
16	BORGRING	LOCK WASHER	SICHERUNGSRING	ANILLO DE SOJECION
17	RING	RING	RING	ILAVE
19	PAKKINGDRUKKER	GLAND	STOPFBUCHSENBRILLE	CASQUILLO PRESAETOP
21	KLEMRING	CLAMPING RING	KLEMMRING	ANILLO DE RETENIDA
22	BOUT	BOLT	SCHRAUBE	PERNO
23	PAKKING	PACKING	PACKUNG	EMPAQUETADURA
26	BRUGSTUK	BRACKET	ZWISCHENSTÜCK	PIEZA INTERMEDIA

FLANGE CONNECTION
DIN-PN 6/10/16
ANSI-CLASS 125/150
JIS-5/10
JIS-16K
WHEN REQUESTED

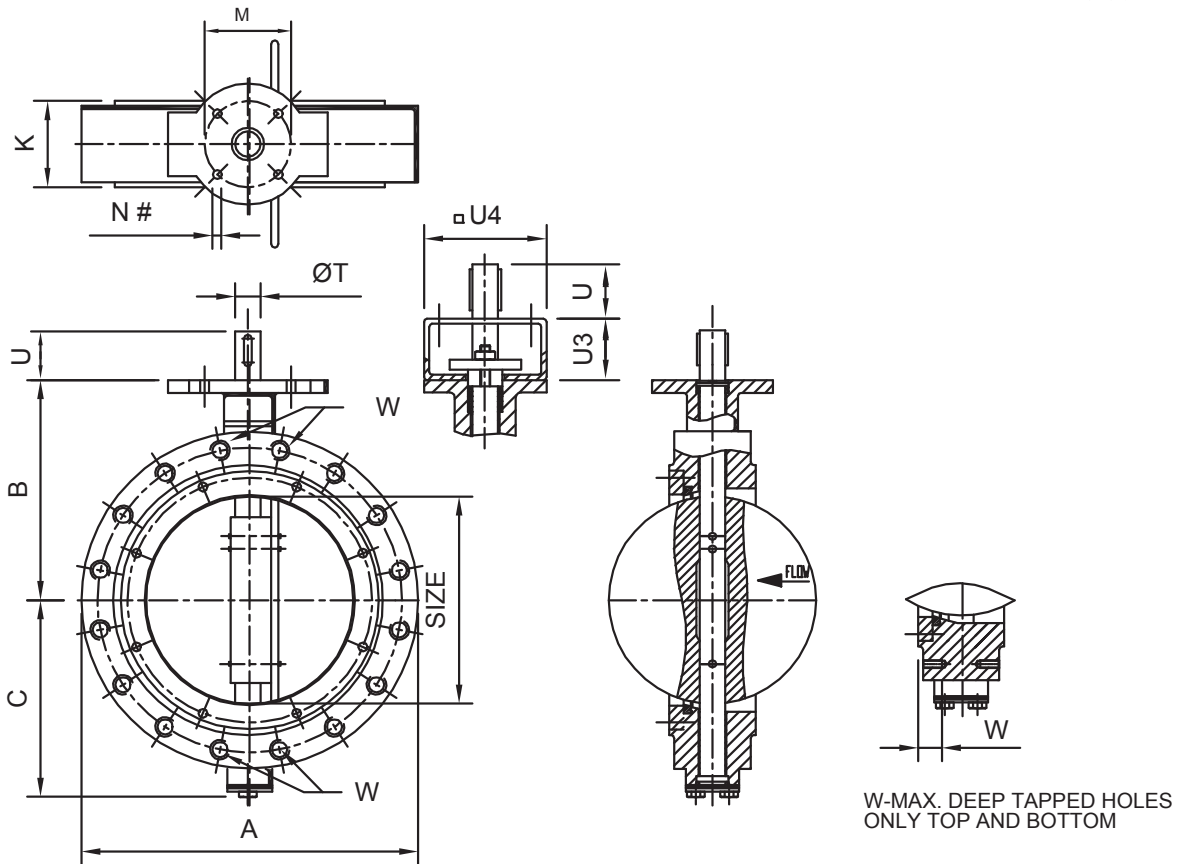
FIGURE: MATERIAL COMBINATION				
TYPE	B	C	D	X
BODY	STANDARD DUCTILE IRON GGG-40			
DISC	AL.BRONZE	AISI-316	AL.BRONZE	GGG-40
SHAFT	AISI-316	AISI-316	AL.BRONZE	AISI-304
SHAFT SEAL	STANDARD BUNA-N OR VITON			
PINS	STANDARD DUPLEX			
LINER	STANDARD BUNA-N OR EPDM			

WHEN REQUESTED					
BODY	B-AL.BRONZE	A-AISI-304 C-AISI-316	S-RST-37/2 G-GS-C25	K-SILUMIN	
DISC	J-DUPLEX	H-HASTELLOY			
SHAFT PACKING	R-GRAFOIL	T-PTFE			
SHAFT AND PINS	M-MONEL K-500	H-HASTELLOY	J-DUPLEX		
SEAT	V-VITON S-SILICONE	FIRESAFE/DESIGN F-PTFE/INCONEL	METAL-SEAT I-INCONEL	K-PTFE+AISI-316	T-PTFE
TOPFLANGE ACC. ISO-5211					

FACE TO FACE DIMENSIONS ACCORDING INTERNATIONAL STANDARDS

WVTB-NOVA-LT

WAFER LUG TYPE DOUBLE ECCENTRIC - RENEWABLE SEAT
DRILLED OR TAPPED HOLES



DIMENSIONS

SIZE mm	SIZE inch	A	B	C	K	M	N (#)	T	U	U3	U4	W	Kg
300	12	460	305	260	114	135	14 (4)	40	60	100	200	30	95
350	14	520	345	290	127	135	14 (4)	40	60	100	200	30	121
400	16	580	380	325	140	165	22 (4)	50	60	100	200	40	166
450	18	640	400	345	152	165	22 (4)	50	60	100	200	30	250
500	20	715	455	380	152	165	22 (4)	55	70	100	200	30	360
550	22	795	490	410	152*	165	22 (4)	55	70	100	200	30	410
600	24	840	525	445	178	254	18 (8)	70	85	200	300	45	465
650	26	895	550	472	178*	254	18 (8)	70	85	200	300	30	515
700	28	910	576	490	229	298	22 (8)	80	85	200	300	35	615
750	30	984	615	520	229	298	22 (8)	80	85	200	300	35	745
800	32	1025	655	530	241	298	22 (8)	80	85	200	300	35	840

WHEN REQUESTED: BI-DIRECTIONAL SHUT OFF
M = TOPFLANGE SIZE 400-800 ACC. ISO-5211
STANDARD: TAPPED HOLES
K = FACE TO FACE ACC. DIN-3202 K3 (ISO SERIES 16) (BS-LONG)
(#) = NUMBER OF HOLES
* EXEPT FACE TO FACE DN550 AND DN650

PRESSURE TABLE

STANDARD DELIVERY			WHEN REQUESTED		
STANDARD WORKING/TESTPRESSURE			MAXIMUM WORKING/TESTPRESSURE		
SIZE mm	WP ΔP-BAR	TP ΔP-BAR	SIZE mm	WP ΔP-BAR	TP ΔP-BAR
300-800	10	11	300-800	16	18
			300-550	25	28

BODY TEST 1.5X PN

FACE TO FACE DIMENSIONS ACCORDING INTERNATIONAL STANDARDS